



# CMS Pro

## Central Monitoring System

*Full featured Enterprise Class Surveillance Solution*

### KEY FEATURES

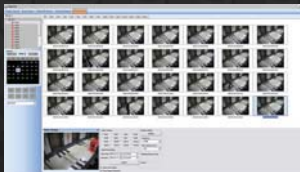
» **Max. 512 Channel Display**

CMS Pro supports Dual Monitor Display of each 256 views.



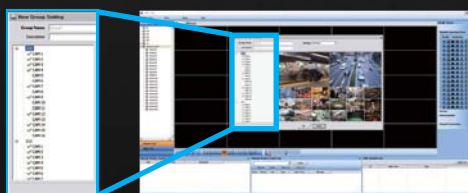
» **Smart Search**

Users are able to search specific videos by setting the certain area of a channel to detect motion. If the movement is detected in the area, it will automatically display the video clip in the search window.



» **Multi Grouping**

Users are able to select certain channels from specific DVRs and make their own combination with them as a group.



» **Instant Playback**

CMS Pro provides Instant Playback function on Live, Log List and Event List by choosing the items.



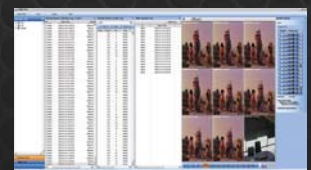
» **Thumbnail Search**

CMS Pro supports Thumbnail Search (Panorama Search) by setting specific date and time.



» **Full Functional Log Windows**

Log Windows show users the full functions such as Remote System Log, System Log and Event Log.



» **Multi Level & Hierarchical E-map**

Users are able to organize and monitor the Hierarchical E-map by selecting any level as they want.



» **Live on E-map**

CMS Pro supports Live Pop-up View on E-map. This function enables users to monitor the live videos directly on E-map.

